



HOME AUTOMATION  
The heart of a smarter home.

## Quick Start Guide for steps on how to create an automation or scene.

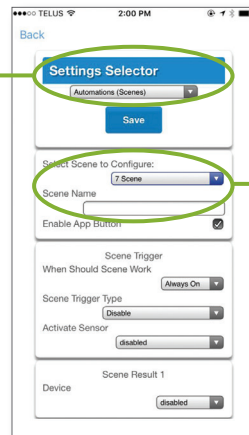


You can automate your system to do many things.  
This guide will walk you through two examples.

### DOOR / WINDOW SENSOR AND Z-WAVE® LIGHT MODULE AUTOMATION

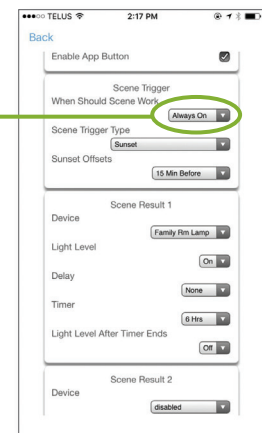
The light will turn on for 10 minutes  
when the closet door is open.

**STEP 1**  
After logging into the site,  
select *Settings* from the  
hamburger menu on the  
top left. Select *Automation  
(Scenes)* from the drop down  
menu in the *Settings* menu.



**STEP 2**  
Select the next available scene,  
“X Scene” and name your  
automaton. Be sure to select a  
name that is intuitive to  
the homeowner.

**STEP 3**  
Select *Always On* and decide what  
triggers the action (i.e. the door  
opens = sensor open). Next, select  
which sensor (i.e. front, side, window,  
closet) initiates the action and how  
long the action will last. Click *SAVE*  
and your automation is set.

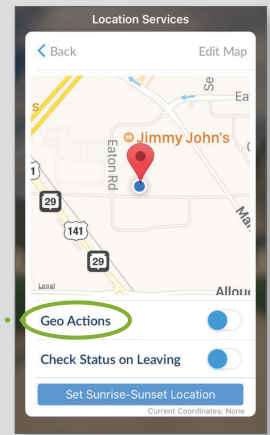
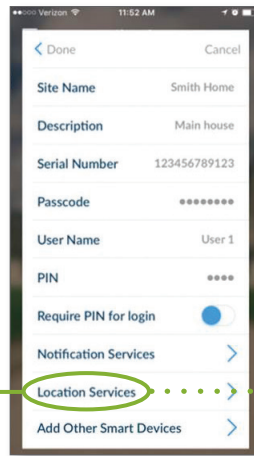


# GEO LOCATION AUTOMATION

The door will lock and the light will turn off when User 1 leaves the premises.

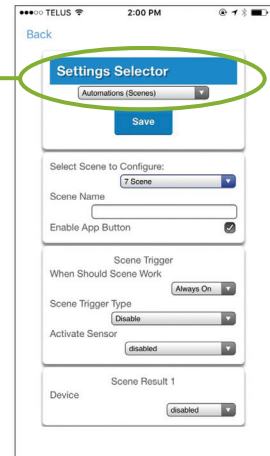
## STEP 1

Click the "i" next to the Site Name, and select *Location Services*. Press the *GEO Actions* button to the right.



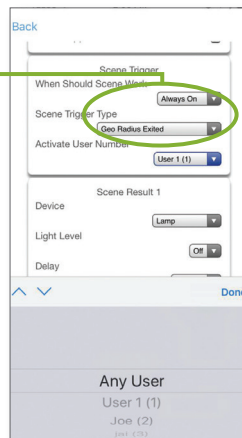
## STEP 2

Enter the site and select *Settings* from the hamburger menu at the top left. Select *Automations (Scenes)* and choose the next available slot and name your automation.



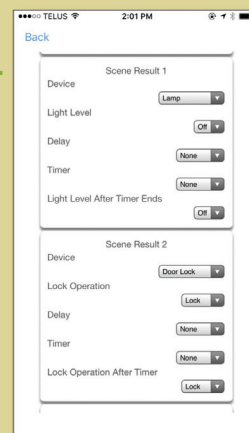
## STEP 3

Select *Always On*, choose scene trigger type (i.e. *Geo Radius Exited*) and which user this automation works for.



## STEP 4

Create the Scene Result(s), click *Save*.



Côr™ Home Automation Quick Start Guides are not intended to take the place of the installation manual. These are intended for those who have previously attended training and have previously installed a Côr Home Automation System. These are intended as reminder guides only.

Z-Wave® is a registered trademark of Sigma Designs.

©2017 Côr™ Home Automation 5/2017

01-COR-002-01